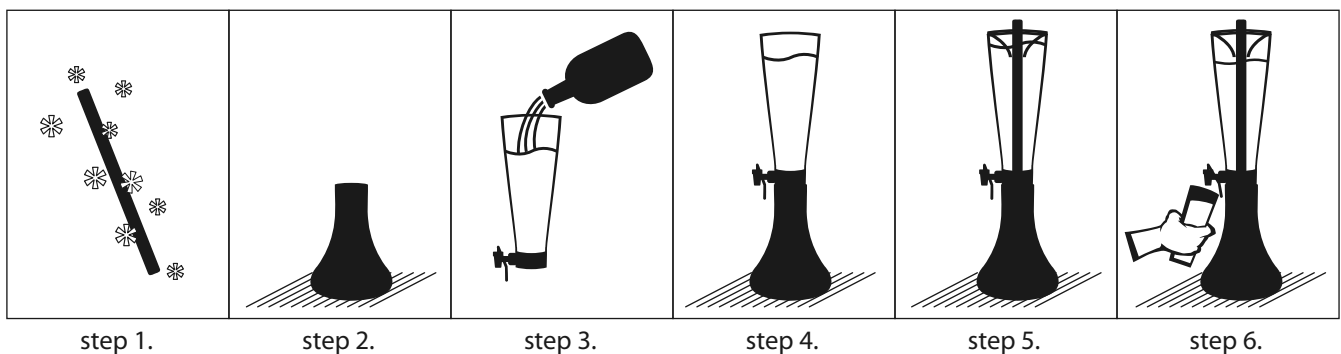




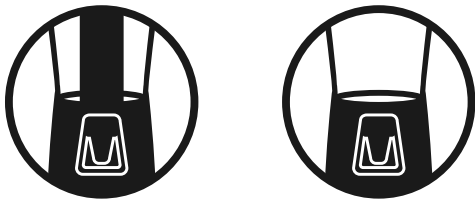
## How to use the HOPR™

- step 1.** Freeze the silver Super Chill Rod for at least 4 hours.
- step 2.** Place the base on the table.
- step 3.** Fill the Hopr with choice beverage.
- step 4.** Using two hands carry the Hopr Funnel to the table and place in the base.  
(DO NOT carry Hopr from the spigot)
- step 5.** Place lid on and insert Super Chill Rod. If the chill rod is cold enough there should be cracking noises. (DO NOT be alarmed this is normal)
- step 6.** To dispense lean glass into the spigot tap to allow drink to come out.



## Note:

Icons printed on the front and side of the Hopr funnel indicate the capacity measurements for using the Hopr with or without the Super Chill Rod.



## Taking care of your Hopr™

- Rinse Hopr and Super Chill Rod between uses.
- When you are done using the HOPR for the day remove spigot by unscrewing and wash unit as you would any other dispenser.
- Avoid using abrasive tools or chemicals as these can scratch the Hopr.
- If you have artwork on your Hopr do not wash the Hopr in water exceeding 140 °F

